

How to Install SQL Engine New Instance

SQL Engine Installation Procedure

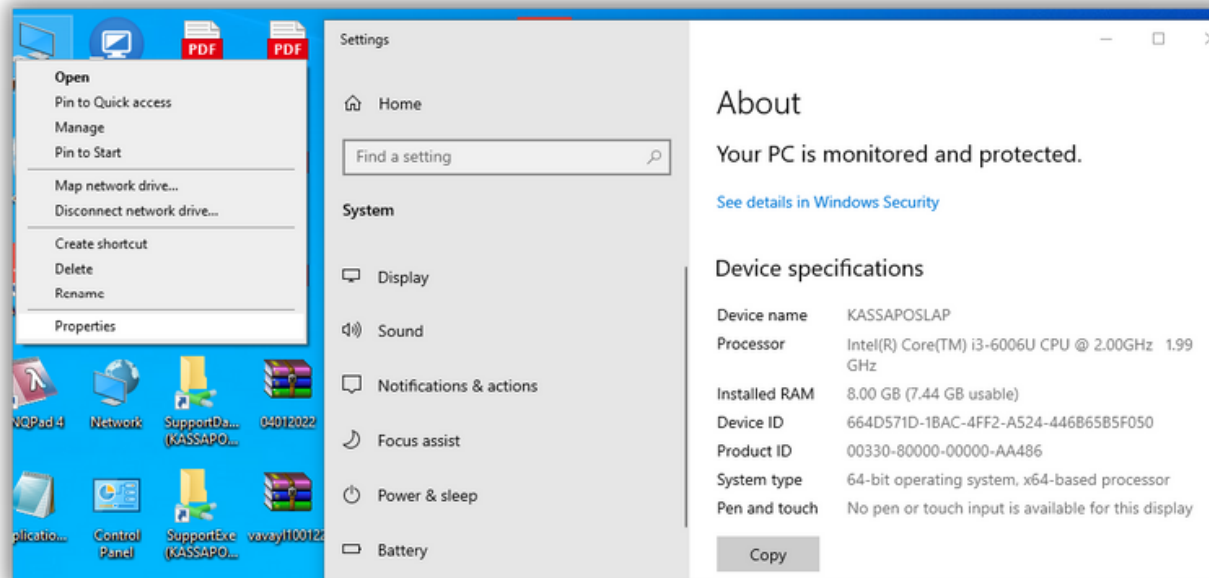
Possystem->SQL Engine

Note: Before installing SQL Engine, please check the System type of your computer.

If your system type is 64 bit then you need to install 64 bit SQL Engine.

If your system type is 32 bit then you need to install 32 bit SQL Engine.

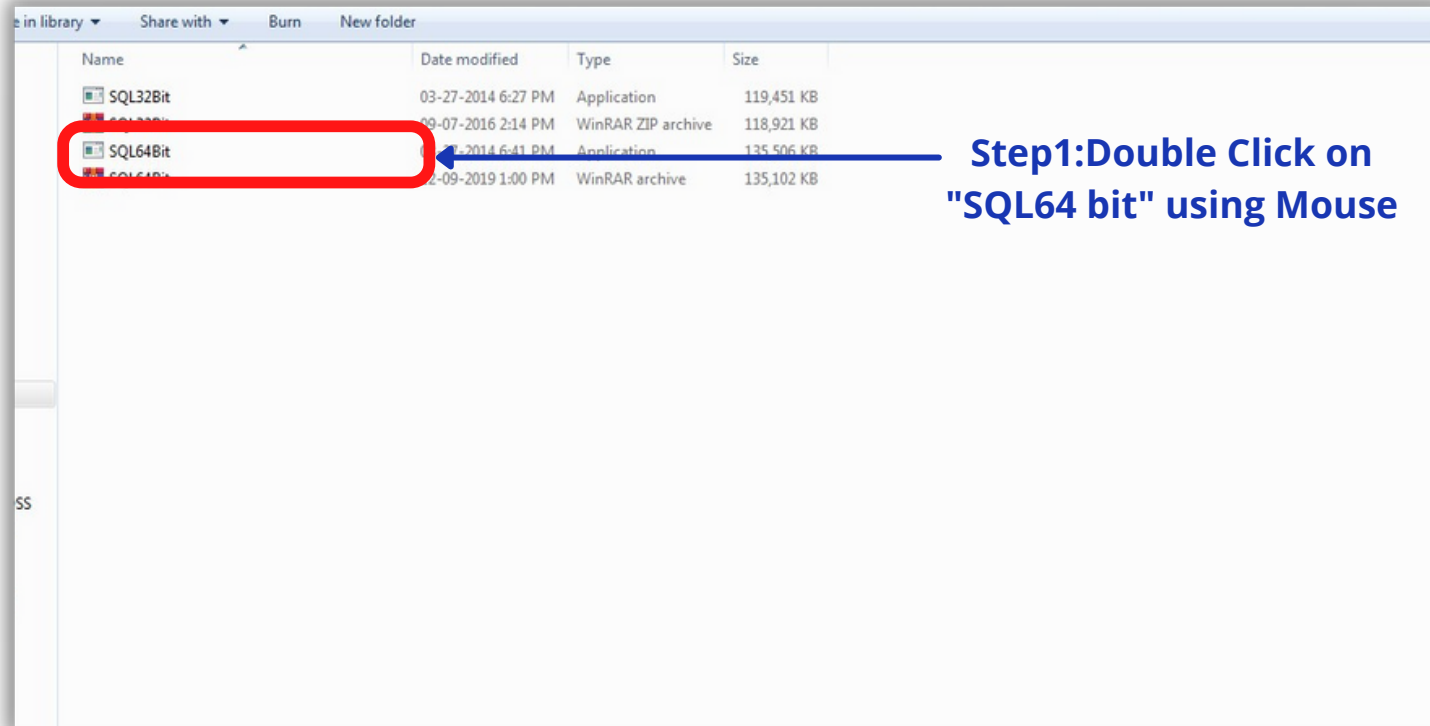
To Verify the System Type, Go to "My Computer" Right Click then Go to "Properties". In Device Specification, it will show the System type.



In the above example, the system type is 64 bit, so we are going to install 64 bit SQL Engine.

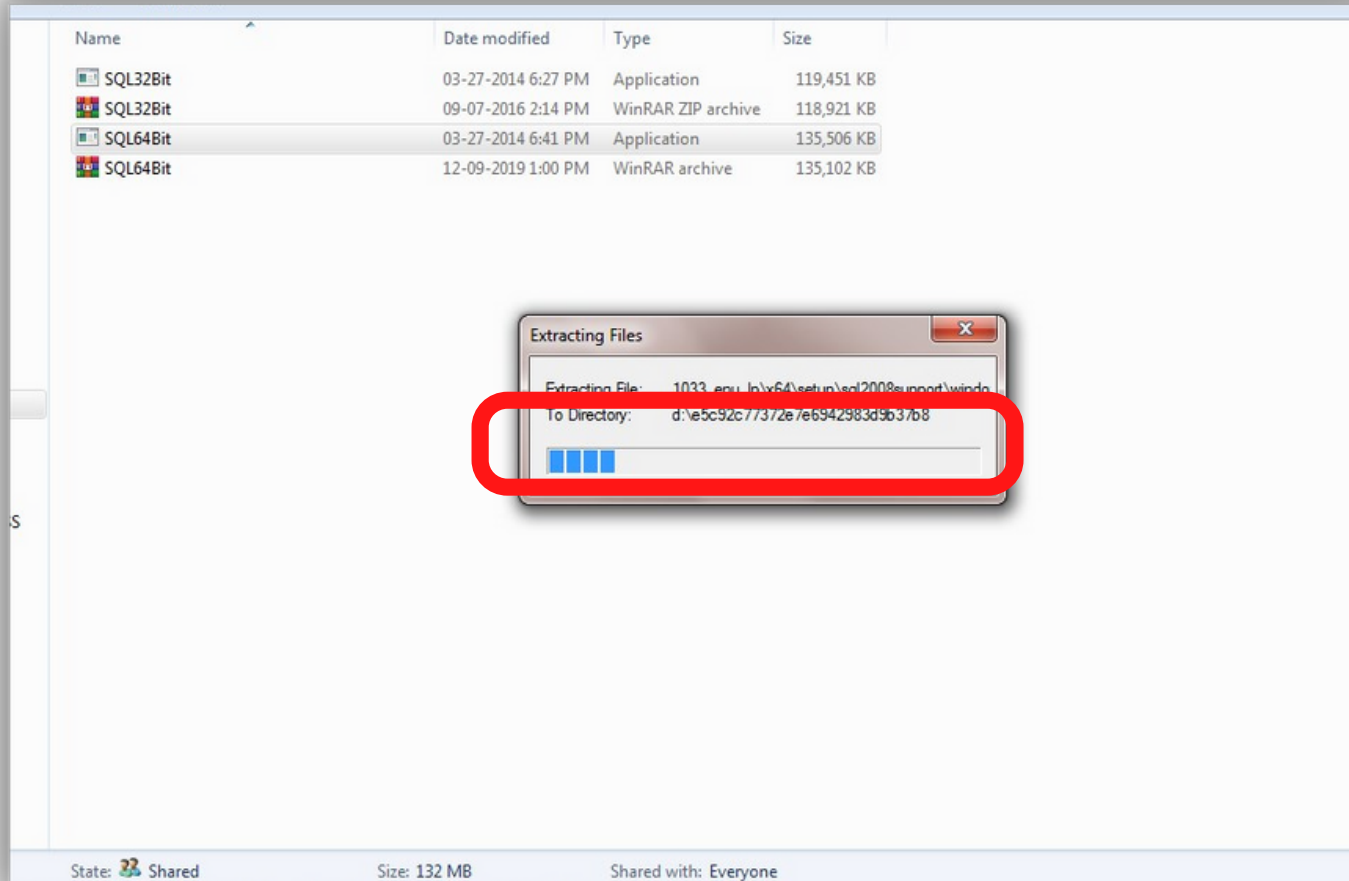
SQL Engine Installation Procedure

Possystem->SQL Engine



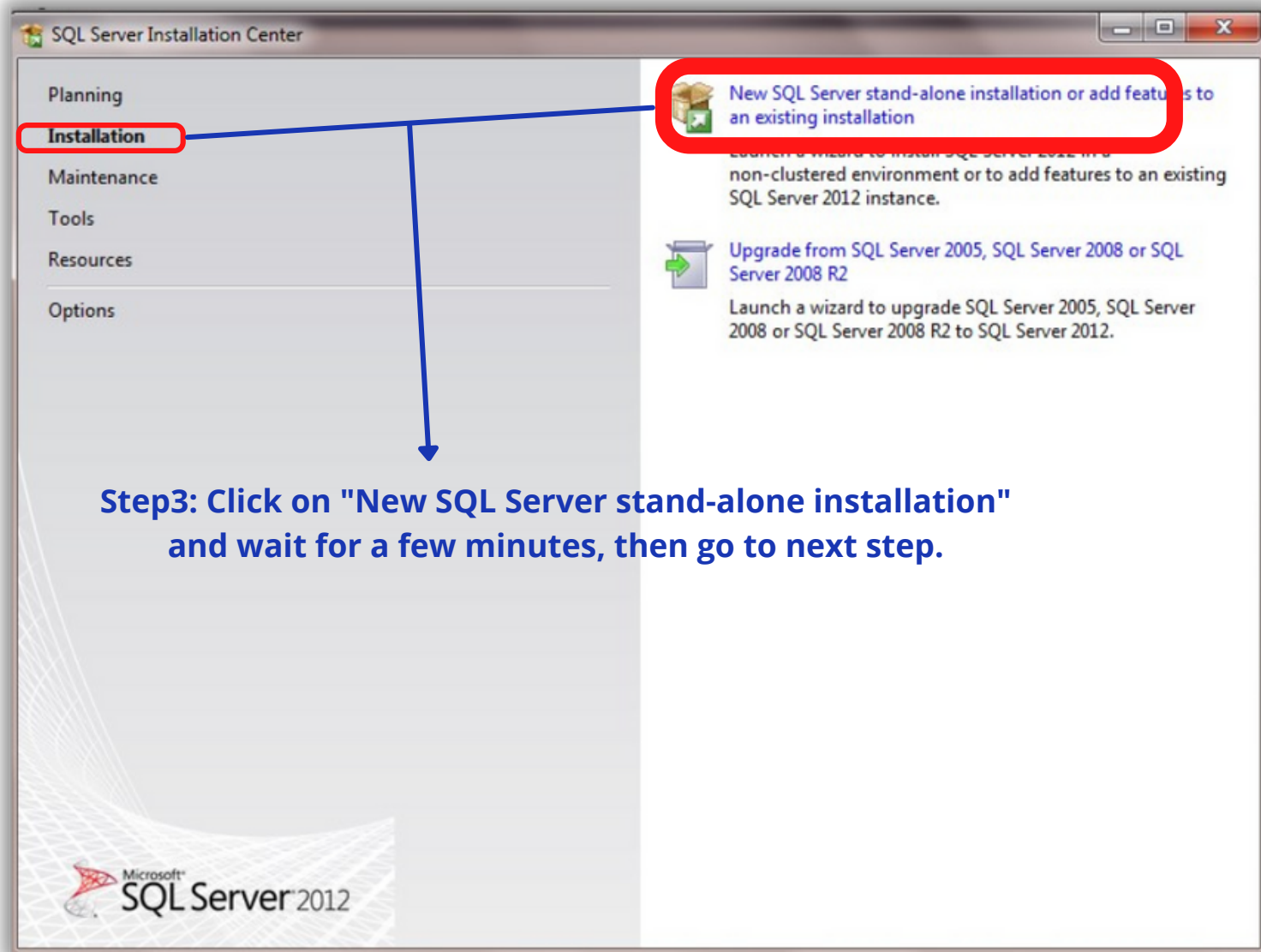
SQL Engine Installation Procedure

Possystem->SQL Engine



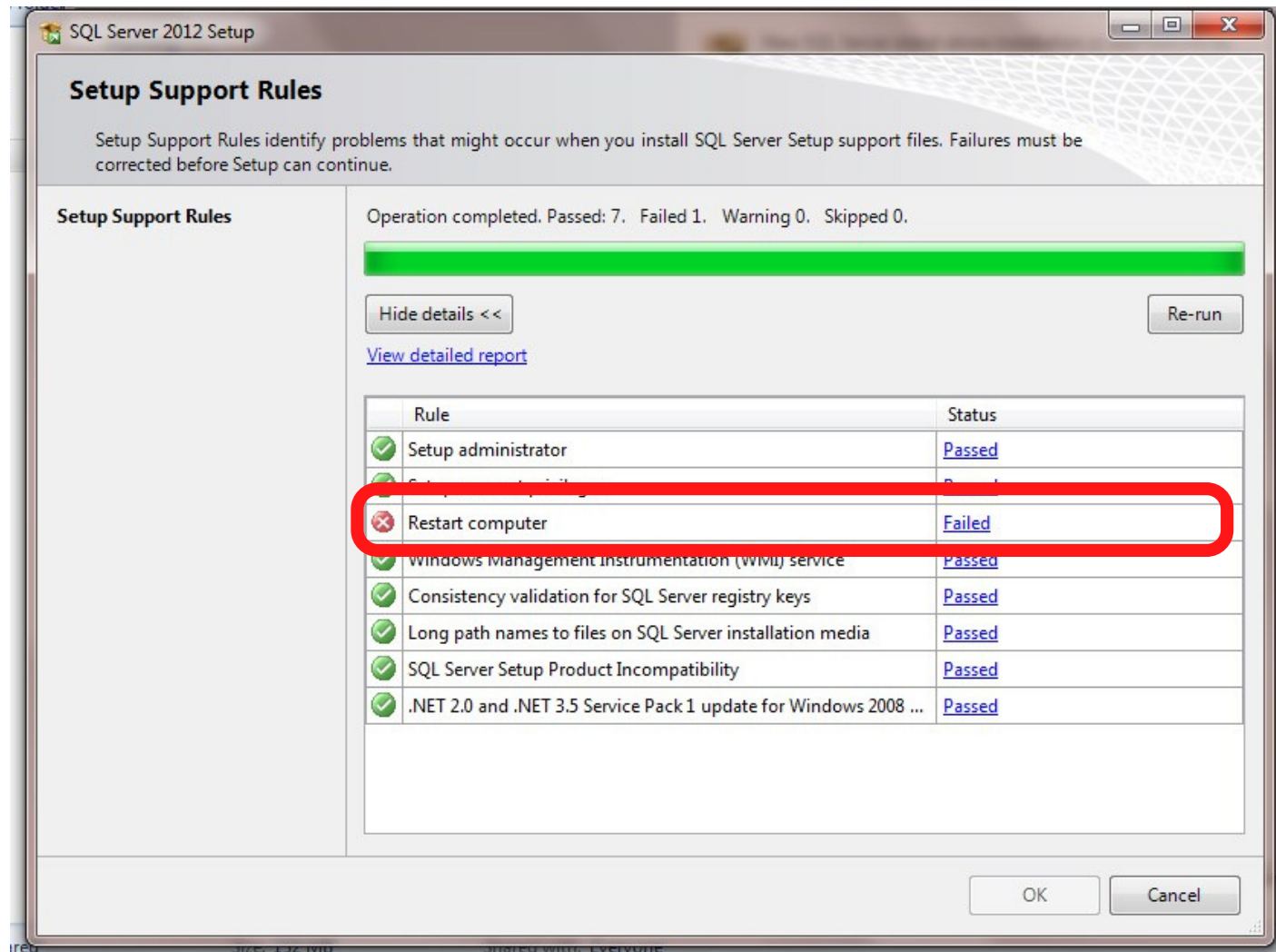
Step2: Wait for few minutes till it is getting fully loaded, then click on Next

SQL Engine Installation Procedure



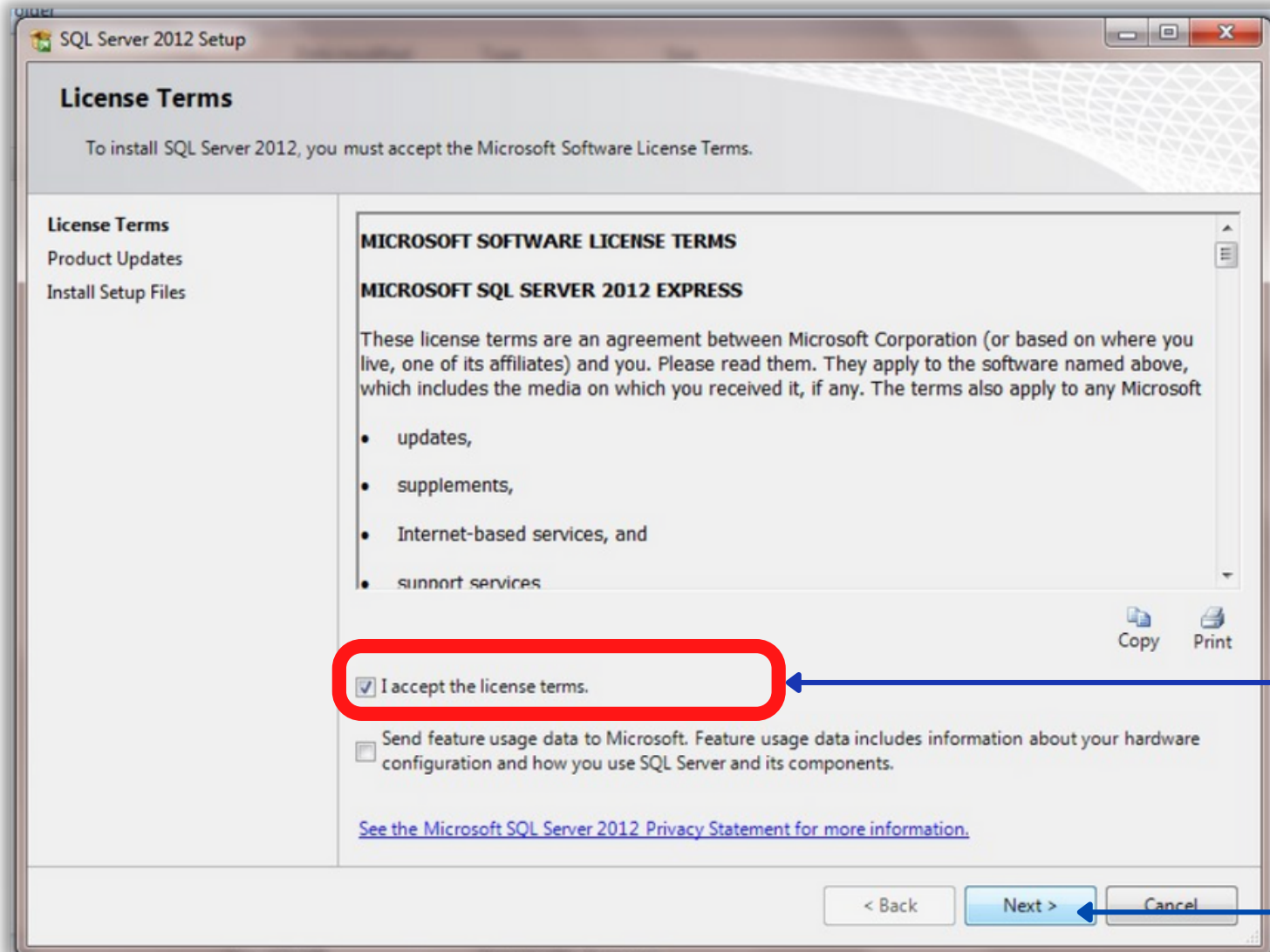
Step3: Click on "New SQL Server stand-alone installation" and wait for a few minutes, then go to next step.

SQL Engine Installation Procedure



Step4: In case if the system is giving "Restart Computer" error, then close the application and restart the computer once. Again follow Step 1 & Step 2 then go to next step.

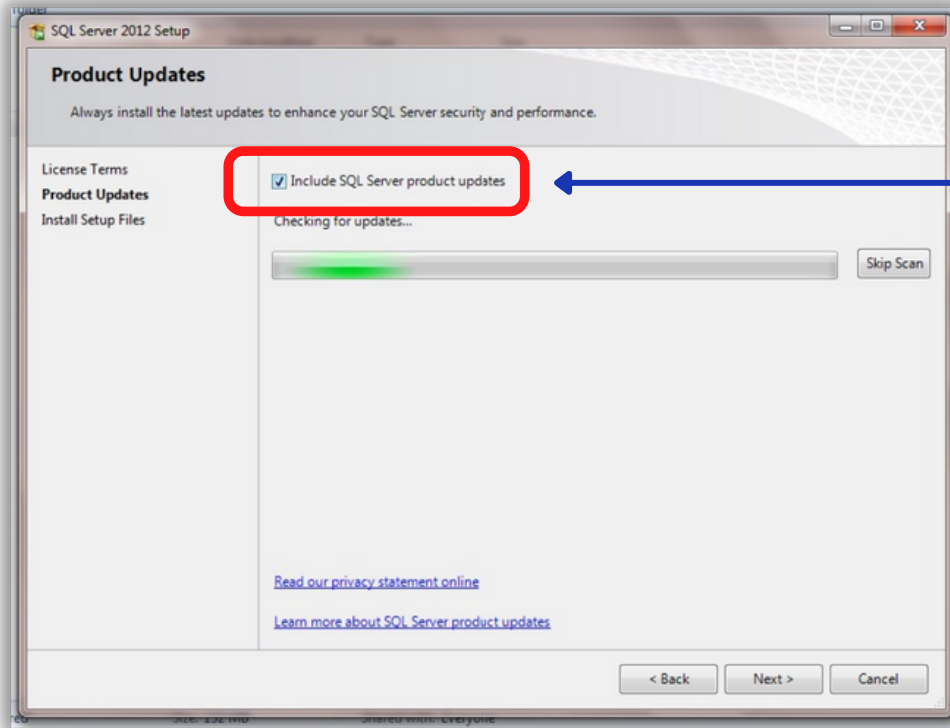
SQL Engine Installation Procedure



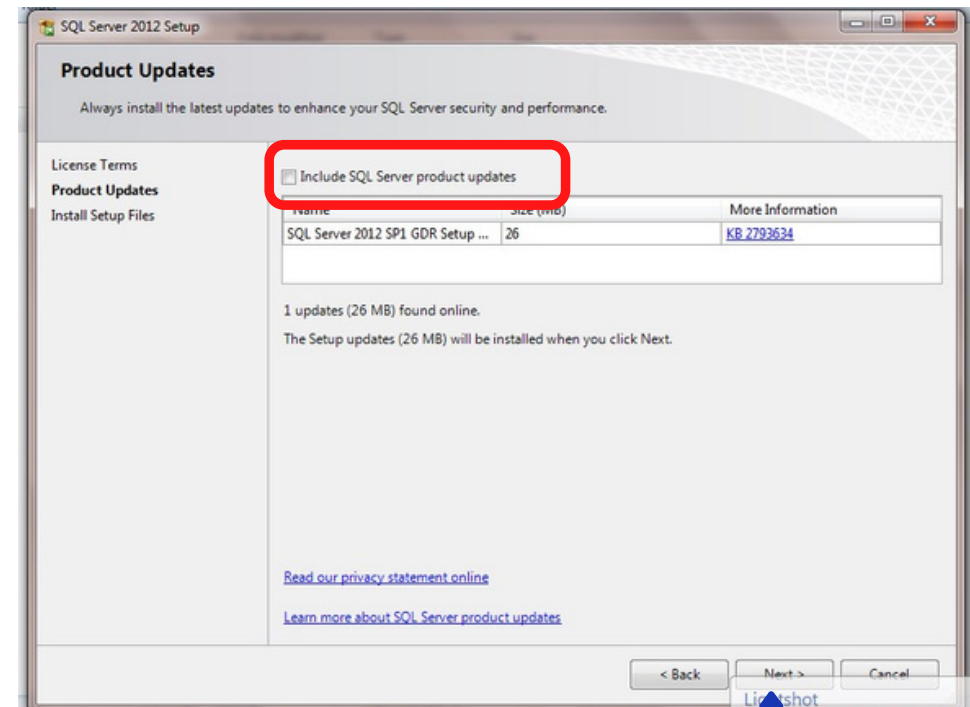
Step5: Click on "I Accept the license terms"

Step6: Click the Next Button

SQL Engine Installation Procedure

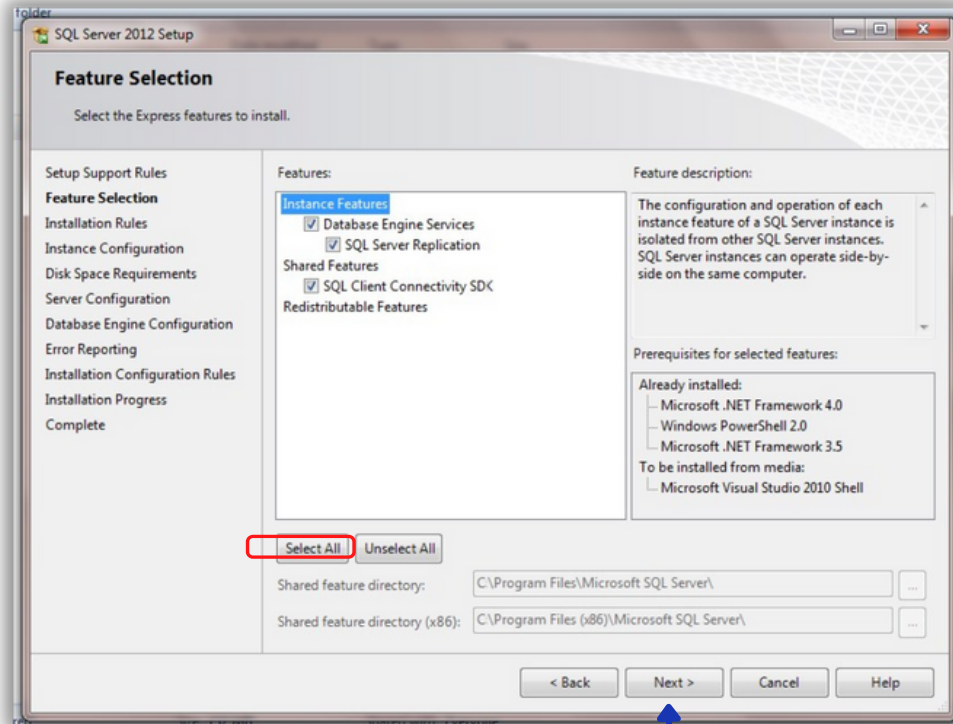


Step7: Remove the Tick on "Include SQL Server product updates"



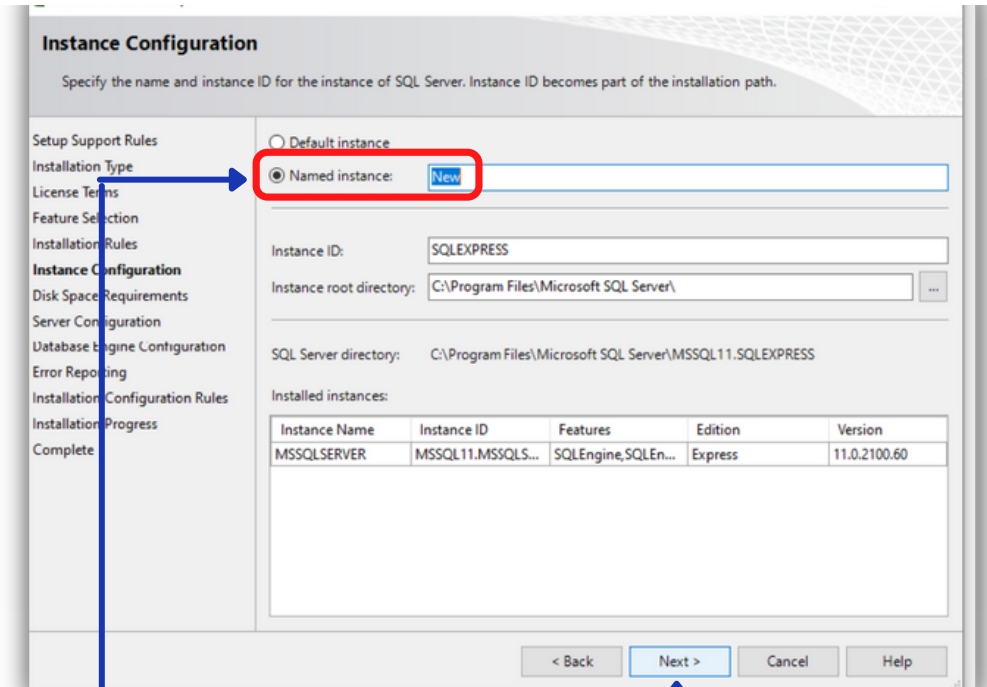
Step8: Click "Next" Button

SQL Engine Installation Procedure



Step9: Click Next Button

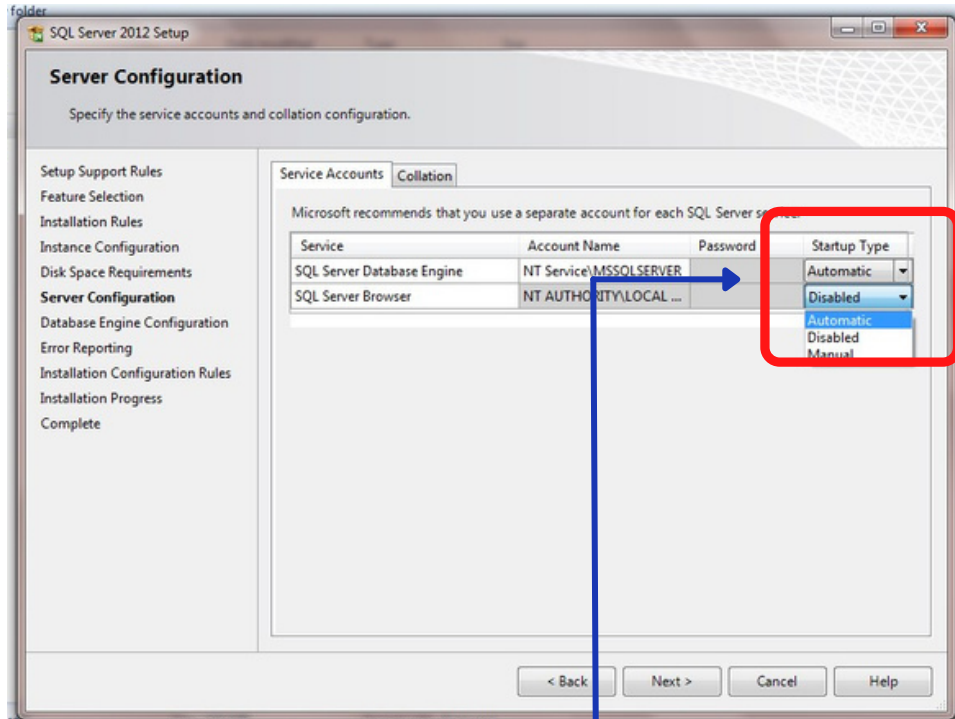
Step10: Click "Named Instance" Radio Button & Manually Enter the Instance Name
Example: InstanceName(NEW)



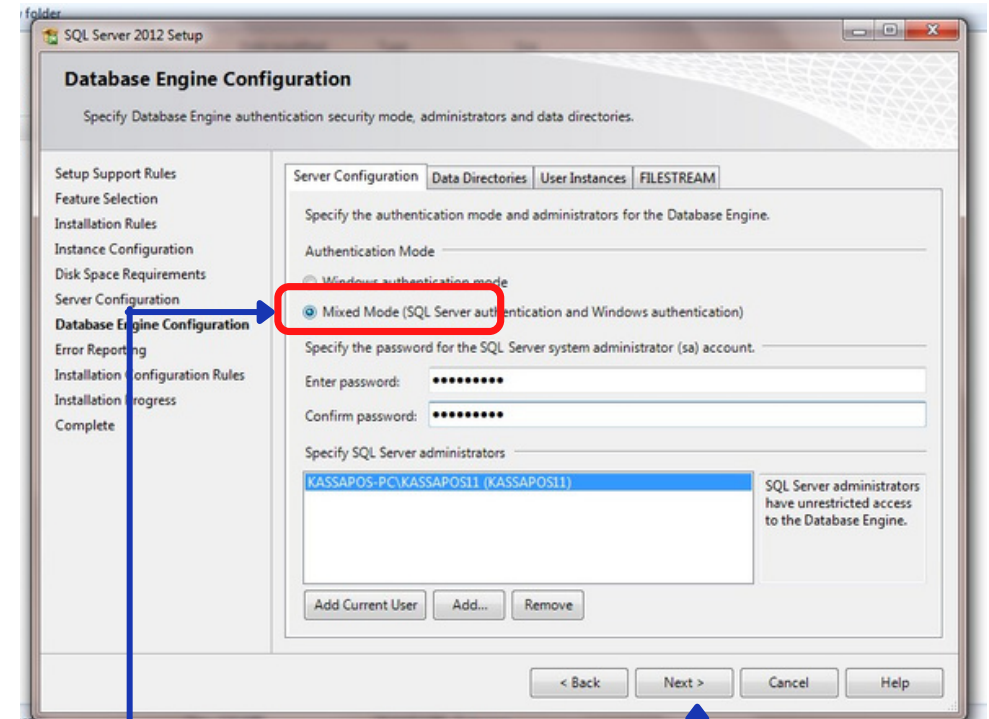
Step11: Click on "Next" Button

Note: Step 10 can be used only for New Installation

SQL Engine Installation Procedure



Step12: Select The Automatic

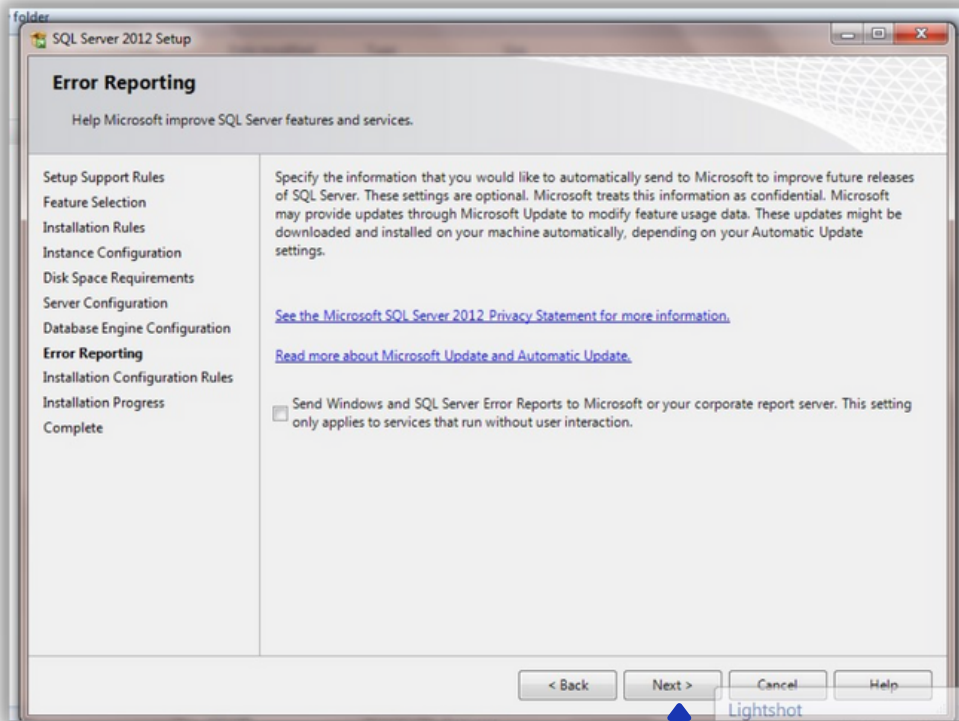


Step13: Click Mixed Mode Radio Button And Enter The Sql PassaWord

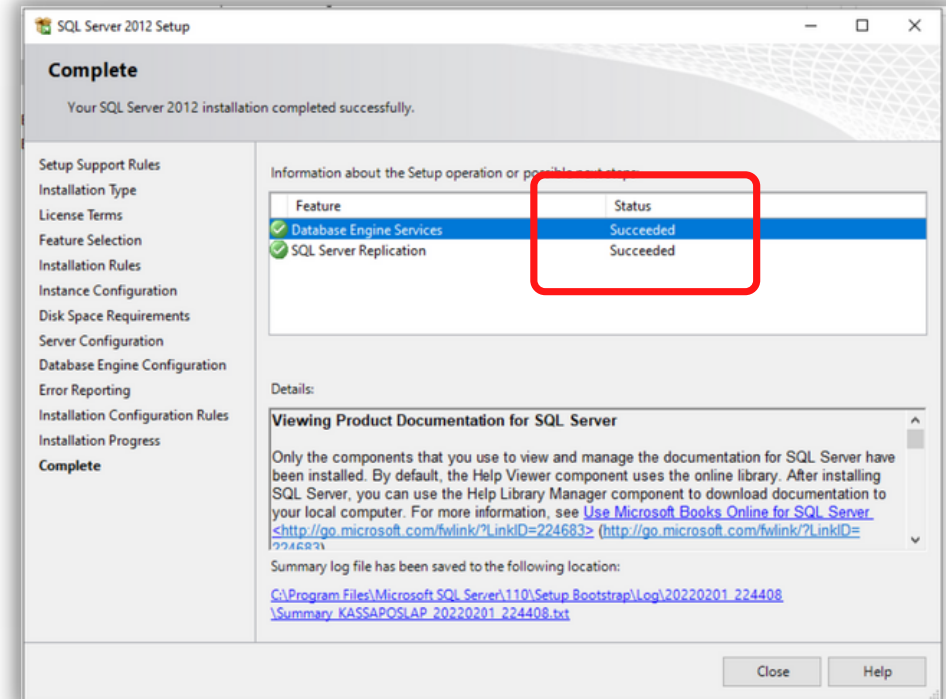
Note: Sql Password- Kassa@123

Step14: Click Next Button

SQL Engine Installation Procedure



Step15: Click Next Button



Step16: Once SQL Installation is started, wait for 5 to 10 minutes to get it completed.